

Dammedley

2014-02-02

20:21

Tenor Sax.

B

A "It's raining men" **B** **C** **D** **E**

$\text{♩} = 140$ 8 8 17 18

54

61

$\text{♩} = 130$ **F** "We are family"

67

G

73

79

H **I**

85 15

105

J

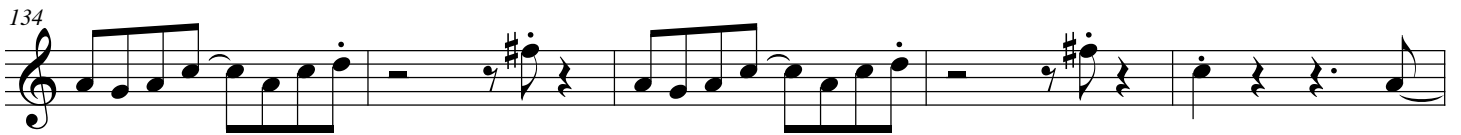
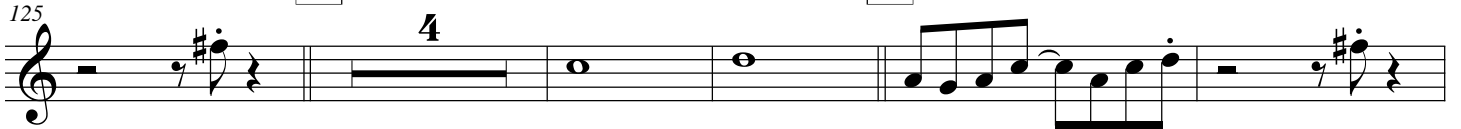


K "Lady marmalade" L

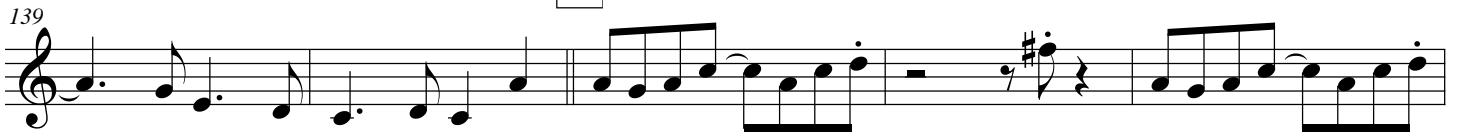


M

N

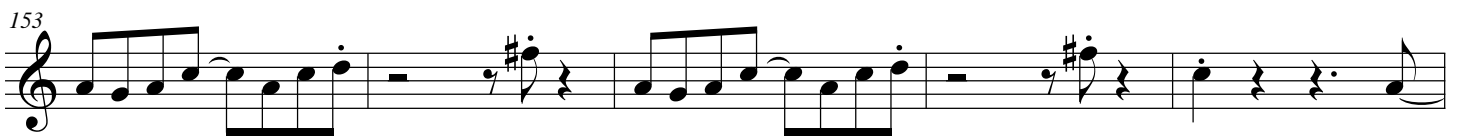
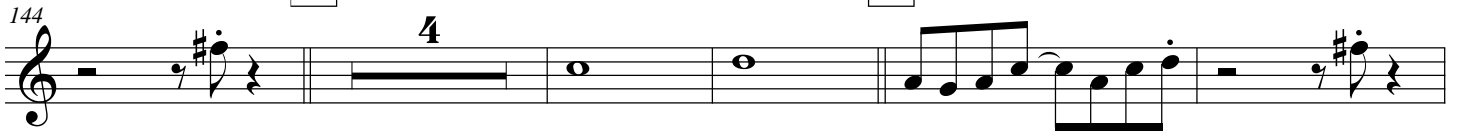


O



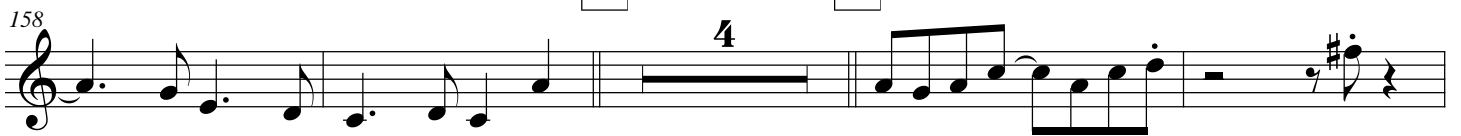
P

Q



R

S



T

rit.

